

Instruction Manual

Air Dry System ATEX

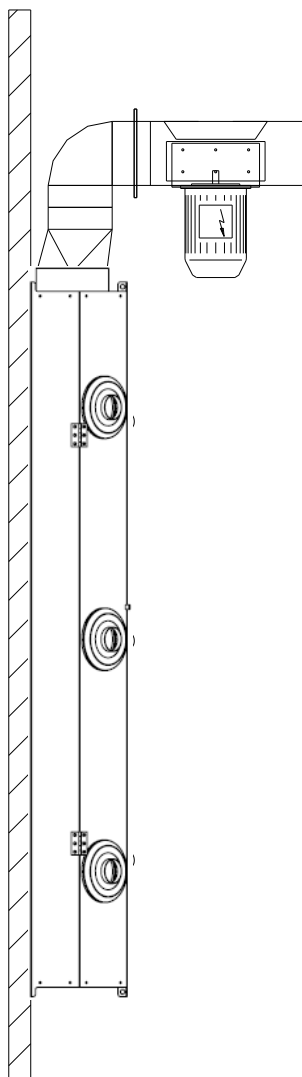


Table of contents

	Pages:
1. General	3
2. Principe	3
3. Advantages	4
4. Delivered material	4
5. Installation	5 - 7
6. Electrical Installation	8 - 10

1. General

This Air Dry System is a Dutch product from Carolux®.

It is a paint drying system that has been developed in cooperation with well-known paint companies.

The result is a good performance drying system for quick drying of water-based and 2-K paints.

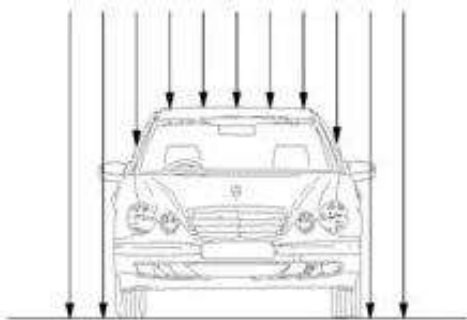
2. Principle

The principle of the ADS can be explained by this detail phenomenon:

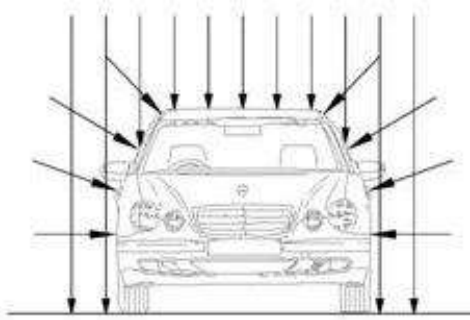
“In quit weather conditions laundry will dry slowly. With a small wind, laundry will dry quickly because of the turbulent air flow”.

Same happens in the spray booth, where during the drying cycle the air flows around the car in an equal flow to the extraction pit. The air hardly touches the car, (which is ideal in spraying mode).

Without ADS:



With ADS:



By making the air turbulent in drying mode, the air will hit more of the bodywork. That will result in a quicker warming up of the panels and because of that, the paint will dry a lot faster.

3. Advantages

- Very fast drying of water based paints, particularly in combination with increased temperature
- Up to 35% reduction in drying time
- Increased number of paint jobs per day
- Saves energy
- Easy to install in new, and older booths of any brand or type
- No need for use of compressed air
- Air is been drawn from inside of the booth that is already filtered and filtered again
- The adjustable air jets for optimum airflow
- Very user-friendly control panel
- Dust free design
- Special design makes it maintenance free

4. Delivered Material

The ADS ATEX is delivered in two carton boxes of approx 60x80x180cm with a total weight of approx 200 kg.

One carton box marked with 'UNIT' contains:

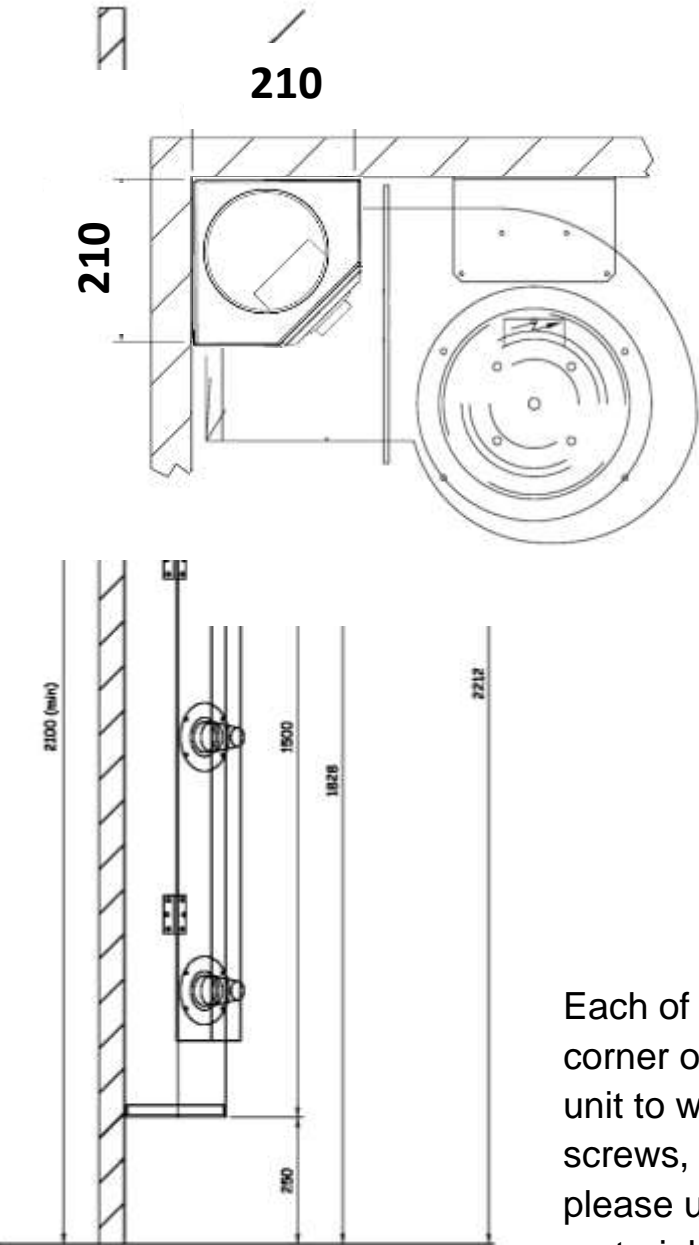
4 x ADS unit (temperature resistance till 90°C)

The other box marked with 'PARTS' contains:

- 1 x Air speed control panel
- 50 meters of electrical cable
- 2.8 meters of ventilation tubes Ø160 mm
- 4 x 90° tubes
- 4 x Ventilator 380 V
- 4 x dismantled filter boxes
- 4 x filters for filter box
- 1 x Manual

5. Installation

The needed free space to place the ADS is reflected on the pictures



Each of the 4 units is placed in a corner of the spray booth. Mount each unit to wall by using the delivered screws, or if these are not sufficient, please use your own appropriate material.

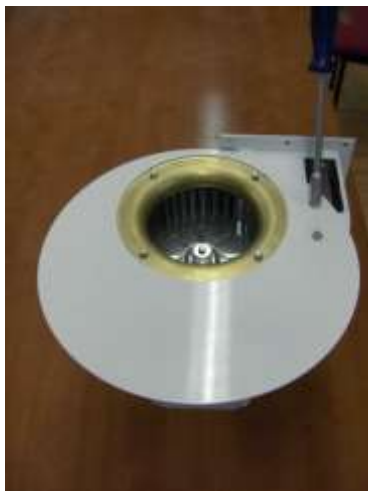
PLEASE NOTE: leave a margin of approx. 250 mm left between the spray booth floor, and the underside of the units.

To mount the ventilator on top of de ADS unit, the following things need to be done:

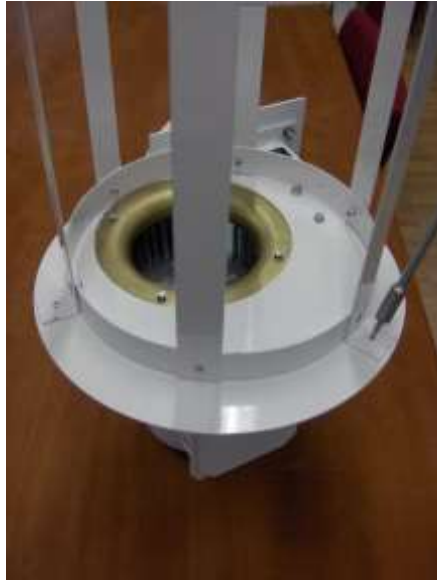
Take the ventilation tube Ø160 mm, and cut in half. Make sure it has no sharp edges or any type of contamination, and mount it on top off the 4 units. Use the delivered screws to connect the tube. After that it, it is recommended to seal it aluminum tape (not delivered), to prevent it from leaking air.

After that is done, it is time to prepare the ventilators and the filter boxes.

Place the ring and the flange on the ventilator (see pictures)



After you have done this you assemble the dismantled filter box and after that you screw it on top of the ring. Make sure you do it just like on the picture (screw only two screws into the ring, please do not screw or drill into the ventilator):



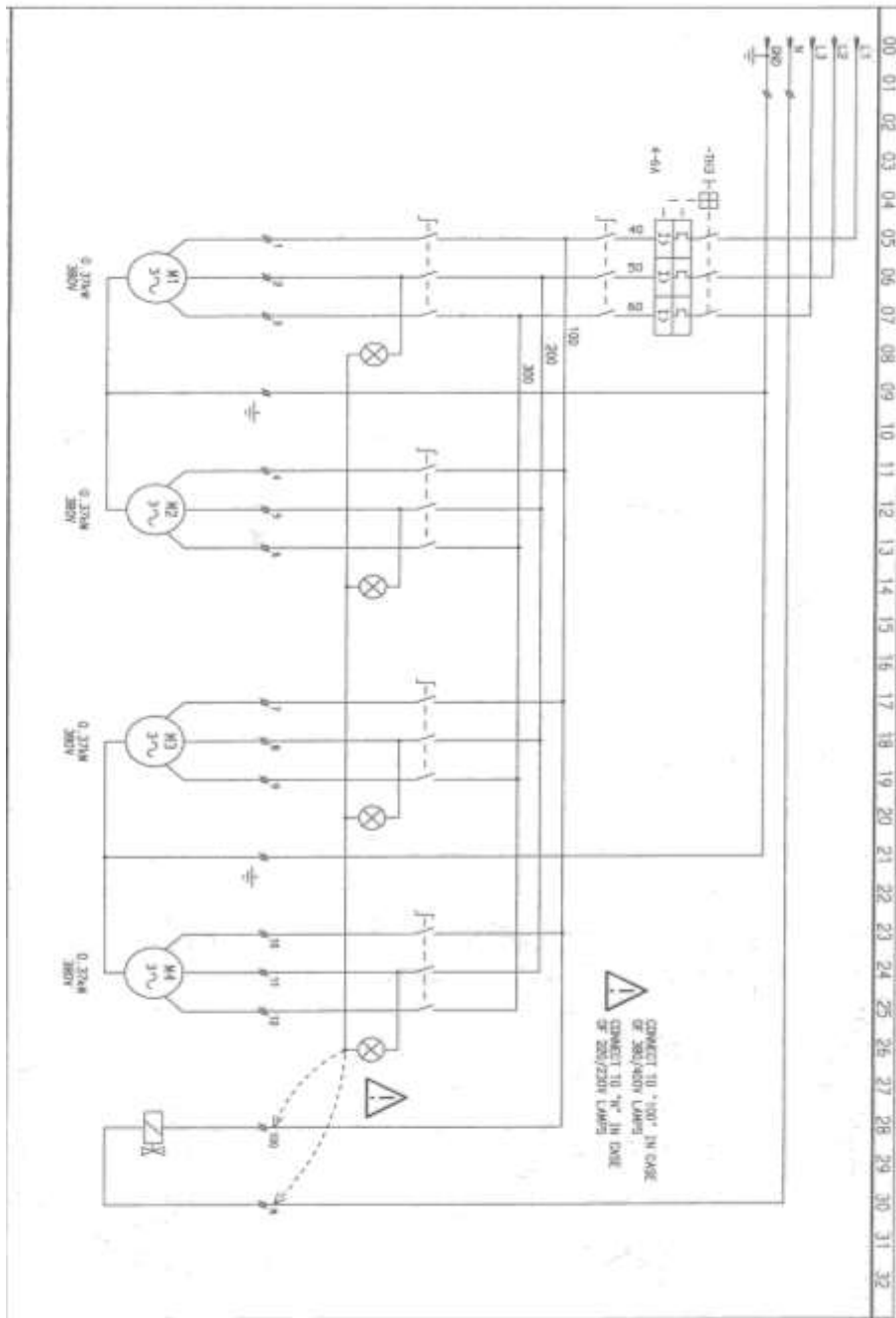
When you have done this you put the ventilator with flange and 90° angled tube on the tube of the ADS Unit. Make sure you have fixed everything together with the screws and put on the silver tape to be sure no air is leaking between the tubes.



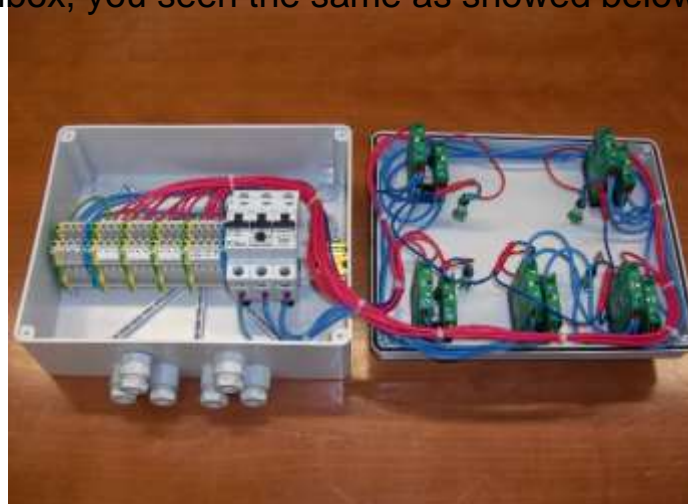
When you assemble the ventilator against the wall of the spray booth you have to use the 90° angled hook and screw the screws through the marked black holes into the van. After that you screw the van against the wall of the spray booth. (See pictures)



6. Electrical connections



When you open the switchbox, you seen the same as showed below.



Make sure that you know which cable belongs to which ADS (mark with M1, M2, M3, M4)

Connect the net supply 380V. Make sure that the voltage is turned off on the relays. Connect grounding with grounding, brown on R and blue on N.

Now you are going to connect ventilator 1. Connect grounding with grounding, brown on R and blue on N.

Make sure you connect the red wire 1 with the brown wire together in the same connection.

On the pictures below you see how each cable is connected. On the left you see power in, and next to that from left to right ventilator 1-4.



After connecting all the ventilators you have to be sure the switches in the switchbox are turned on (turned red). Then you can put the power supply of the ADS on.



We wish you lots of working pleasure with this ADS Air Dry System.

*Please note: We recommend to replace the air filters as often as needed.
The cleaner the filter, the better the system works.*

If you want to order extra ADS filter bags, please contact your local dealer or contact us on info@carolux.nl for extra info.