

Instruction Manual

Air Dry System

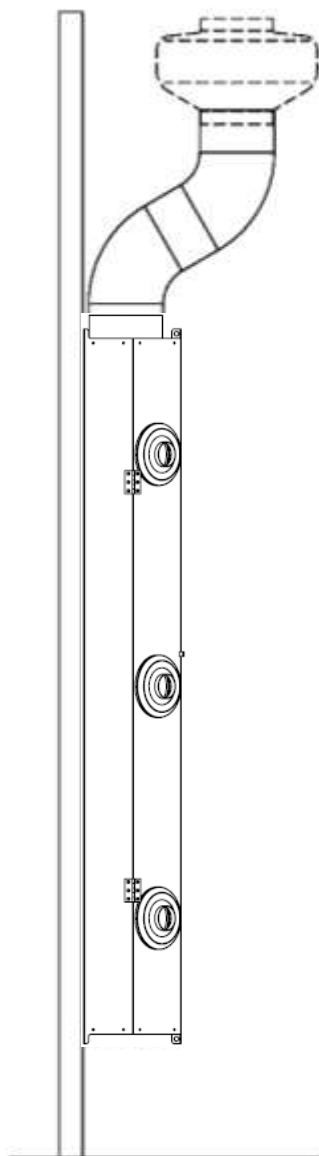


Table of contents

	Pages:
1. General	3
2. Principe	3
3. Advantages	4
4. Delivered material	4
5. Installation	5 - 7
6. Electrical Installation	8 - 11

1. General

This Air-dry system is a Dutch product from Carolux®.

It is a paint drying system that has been developed in coöperation with well-known paint companies.

The result is a good performance drying system for quick drying of water-based paints and 2-K paints.

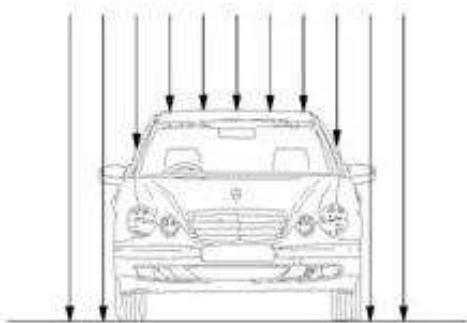
2. Principe

The principle of the ADS system can be explained by this detail phenomenon:

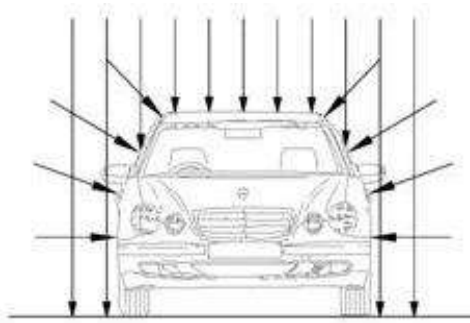
“In quit weather conditions laundry will dry slowly. With a small wind laundry will dry quickly because of the turbulent air flow”.

Same happens in the spray booth, where during the drying cycle the air flows around the car in an equal flow to the extraction pit. The air hardly touches the car, (ideal in spraying mode).

Without ADS:



With ADS:



By making the air turbulent in drying mode, the air will hit more of the bodywork. That will result in a quicker warming up of the panels and because of that, the paint will dry a lot faster.

3. Advantages

- Very fast drying of water based paints, especially in combination with increased temperature
- Drying times up to 35% quicker
- Increased number of paint jobs per day
- Energy savings
- Easy install in new and older booths of any brand or type
- No need for use of compressed air
- Air is been drawn from inside of the booth that is already filtered and filtered again
- Optimal airflow because of the design of the adjustable air jets
- Very user-friendly control panel.
- Dust free design
- Maintenance friendly

4. Delivered Material

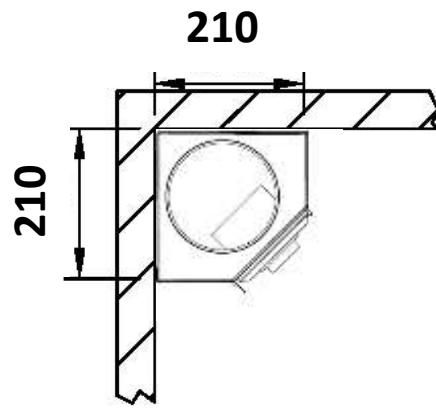
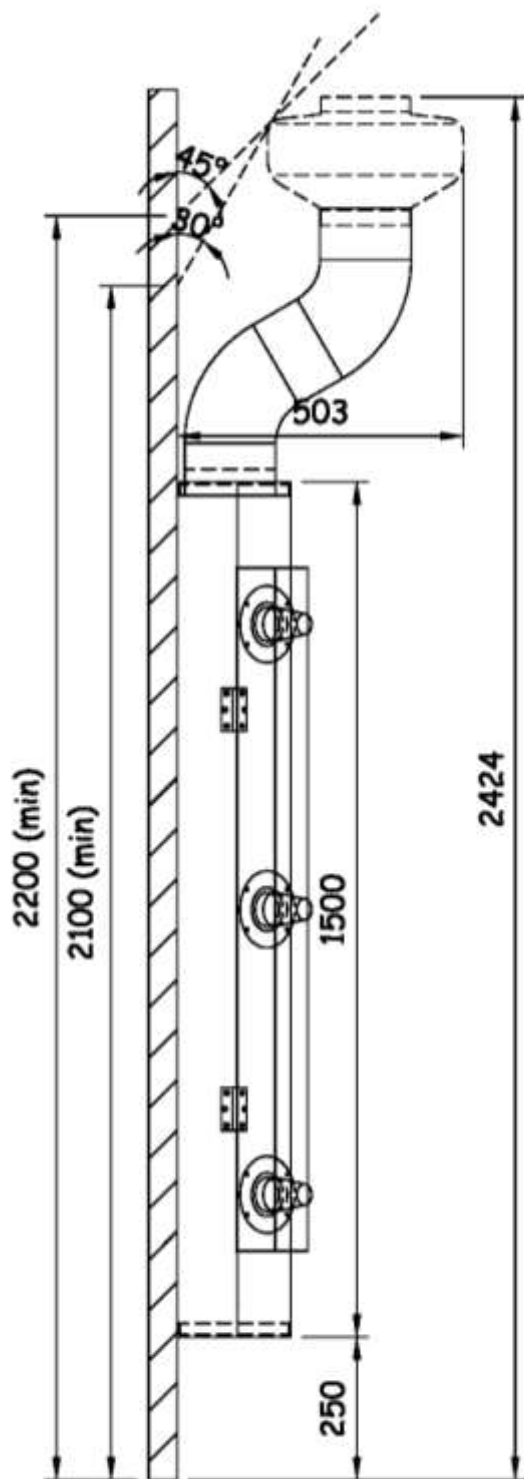
The ADS is delivered in carton boxes with a total weight of approx. 200 kg.

4 x ADS unit (temperature resistance till 90°C)

- 1 x Air speed control panel
- 50 meters of electrical cable
- 2.8 meters of ventilation tubes Ø160 mm
- 8 x 45° tubes
- 4 x Ventilator 230 V
- 4 x dismantled filter boxes
- 4 x filters for the filter boxes
- Aluminium tape
- Screws for mounting the tubes and system
- 1 x Manual

5. Installation

The needed free space to place the ADS is reflected on the pictures



Each of the 4 units is placed in a corner of the spray booth. Mount each unit to wall by using the delivered screws, or if these are not sufficient, please use your own appropriate material.

PLEASE NOTE: leave a margin of approx. 250 mm left between the spray booth floor, and the underside of the units.

To mount the ventilator on top of de ADS unit, the following things need to be done:

Take the ventilation tube Ø160 mm, cut it in half, Make sure it has no sharp edges or any type of contamination, and mount it as mentioned below. Use the delivered screws to connect the 100mm of tube, to the 45° tubes. Three or four screws at each 45° tube is enough. After that it, it is recommended to seal it aluminum tape (included), to prevent it from leaking air.

Look at the picture:



PLEASE NOTE: if you want to use the filter boxes on top of the ventilators, you will need approx 400mm of free space between the top of the ventilator, and the sealing of the spray booth! Otherwise, you cannot put the filters on top of the filter box.

Now it is time to assemble the filter boxes. Look at the pictures to see how it is done.

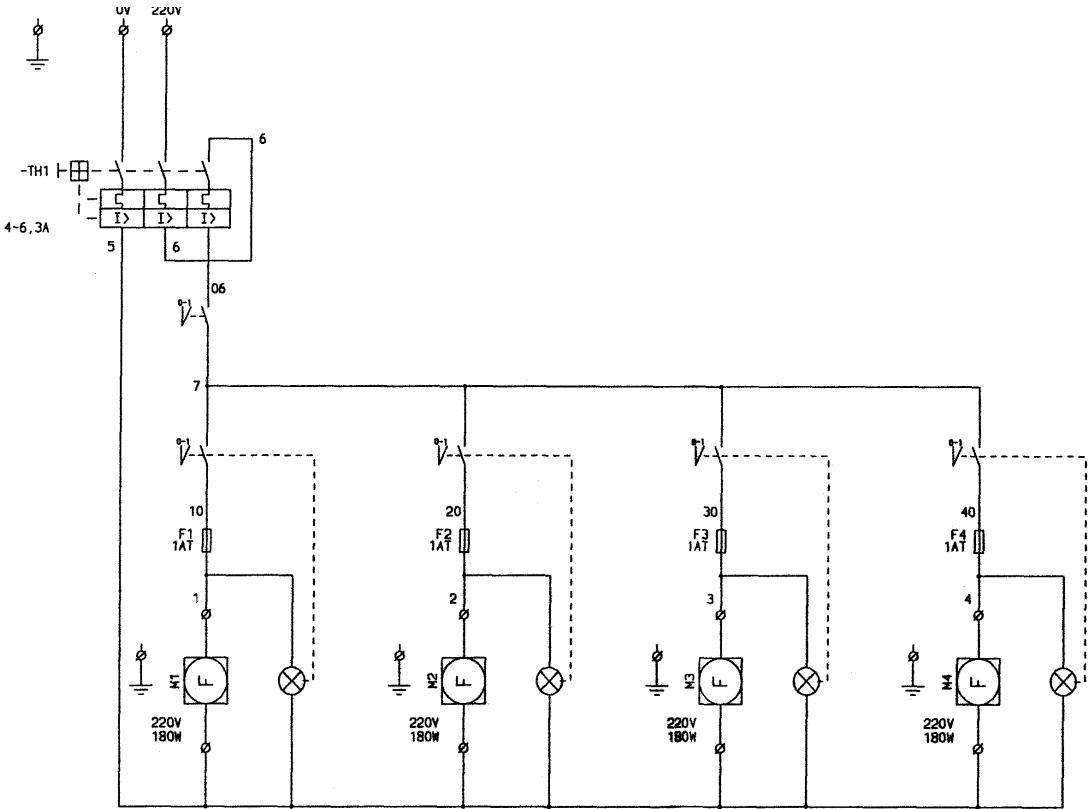


After this, mount the ventilator together with the tube on top of the ADS unit. Use again the delivered screws, and seal if possible with aluminum tape. We recommend doing this with two persons. This makes it a lot easier to do.

Please note: We recommend to replace the air filters as often as needed. The cleaner the filter, the better the system works.

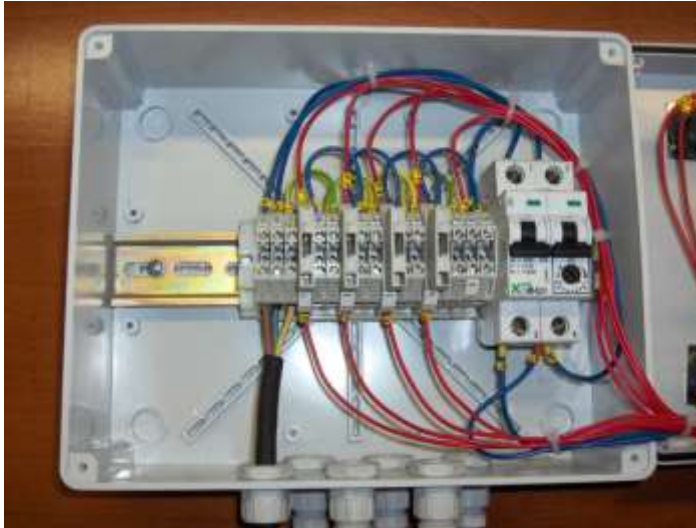
If you want to order extra ADS filter bags, please your local dealer for information.

6. Electrical connections



Make sure that you know which cable belongs to which ADS (mark with M1, M2, M3, M4)

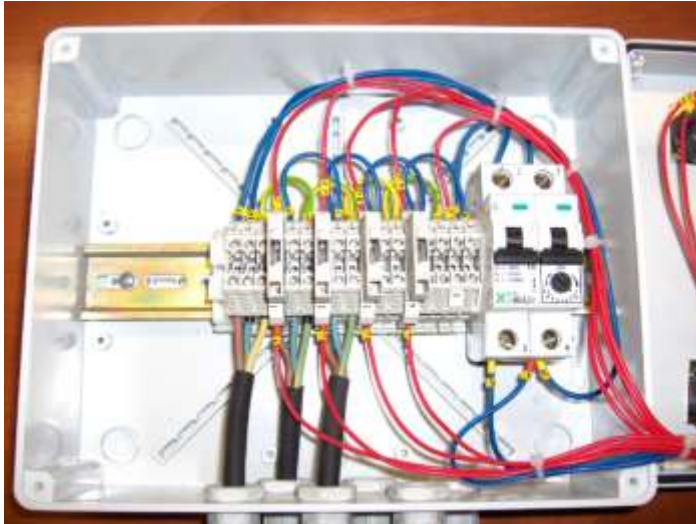
Connect the net supply 230V. Make sure that the voltage is turned off on the relays. Connect grounding with grounding, brown on R and blue on N



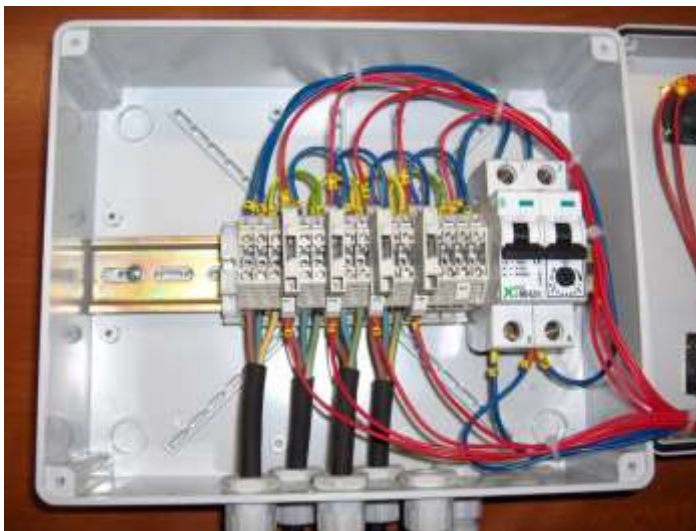
Now you are going to connect ventilator 1. Connect grounding with grounding, brown on R and blue on N. Make sure you connect the red wire 1 with the brown wire together in the same connection.



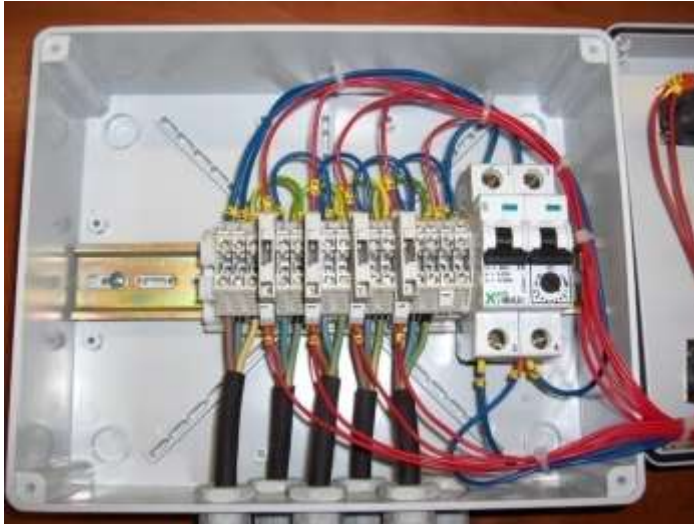
Now you are going to connect ventilator 2. Connect grounding with grounding, brown on R and blue on N. Make sure you connect the red wire 2 with the brown wire in the same connection.



Then you connect ventilator 3. Connect grounding with grounding, brown on R and blue on N. Make sure you connect the red wire 2 with the brown wire in the same connection.



Then you connect the last ventilator 4. Connect grounding with grounding, brown on R and blue on N. Make sure you connect the red wire 2 with the brown wire in the same connection.



PLEASE NOTE: Make sure that all cables are covered well and fix the control panel on the right position!
After everything is assembled, you can check if everything is working properly, the set is now ready to use.

When there are any questions about the systems, or spare parts are needed, please send us an email on info@carolux.nl or sales@carolux.nl